

B&W Digital Production Printers

**RICOH**  
imagine. change.

# Ricoh Pro™ 8320s/8310s series

✓ Copier ✓ Printer ✓ Scanner



Pro 8310s

111 B/W  
ppm

Pro 8320s

136 B/W  
ppm



# Build your business with stability, quality, reliability and versatile printing

What does it take to expand your in-house print production? How can you get the stable performance you need?

The new Ricoh Pro 8320/8310 delivers exactly what your competitive environment demands. And more besides. Our printers offer impressive black and white speeds for high document volume at up to 136ppm. Robust design that stands the test of time with auto recovery to minimise downtime and maximise your turnaround time and large operation panel for simple usability.

The brand new range of automated high-end finishing options gives you even greater versatility to capture more business from speciality books to professional bids and manuals.

The new Ricoh Pro 8320/8310 offers the new options you need to grow and enhance your business.

- New higher finishing capability
- Enhanced productivity
- Better reliability
- Simpler to use







### Designed to be productive and reliable

The Ricoh Pro 8320/8310 deliver outstanding high volume, black and white output at speeds up to 136ppm providing the quality and reliability you need.



### Higher finishing capability

From text books, corporate manuals and general booklets to speciality cookbooks and educational books, the Ricoh Pro 8320/8310 range of new high-end finishing options offers more opportunities to increase productivity and media capability.



### Easier for everyone to use

New large operation panel. Features such as an improved user interface design on the 17 inch smart touch screen panel allows easy operation. Jam removal process is more intuitive with LED guidance.



### High image quality

Both models use innovative VSCEL\* technology to provide clean, smooth high-definition image quality, with 2400 x 4800dpi resolution and higher consistent image quality over long runs.

\*Vertical Cavity Surface Emitting Laser



# Better technology and value

## The latest laser technology

Our innovative VCSEL\* technology gives best in class resolution of 2400 x 4800dpi creating outstanding image quality. VCSEL has as many as 40 laser beams emitting simultaneously to give exceptionally accurate and smooth, professional quality. Indirect transfer belt technology also contributes to higher image quality, plus new process control maintains higher image consistency over long runs.

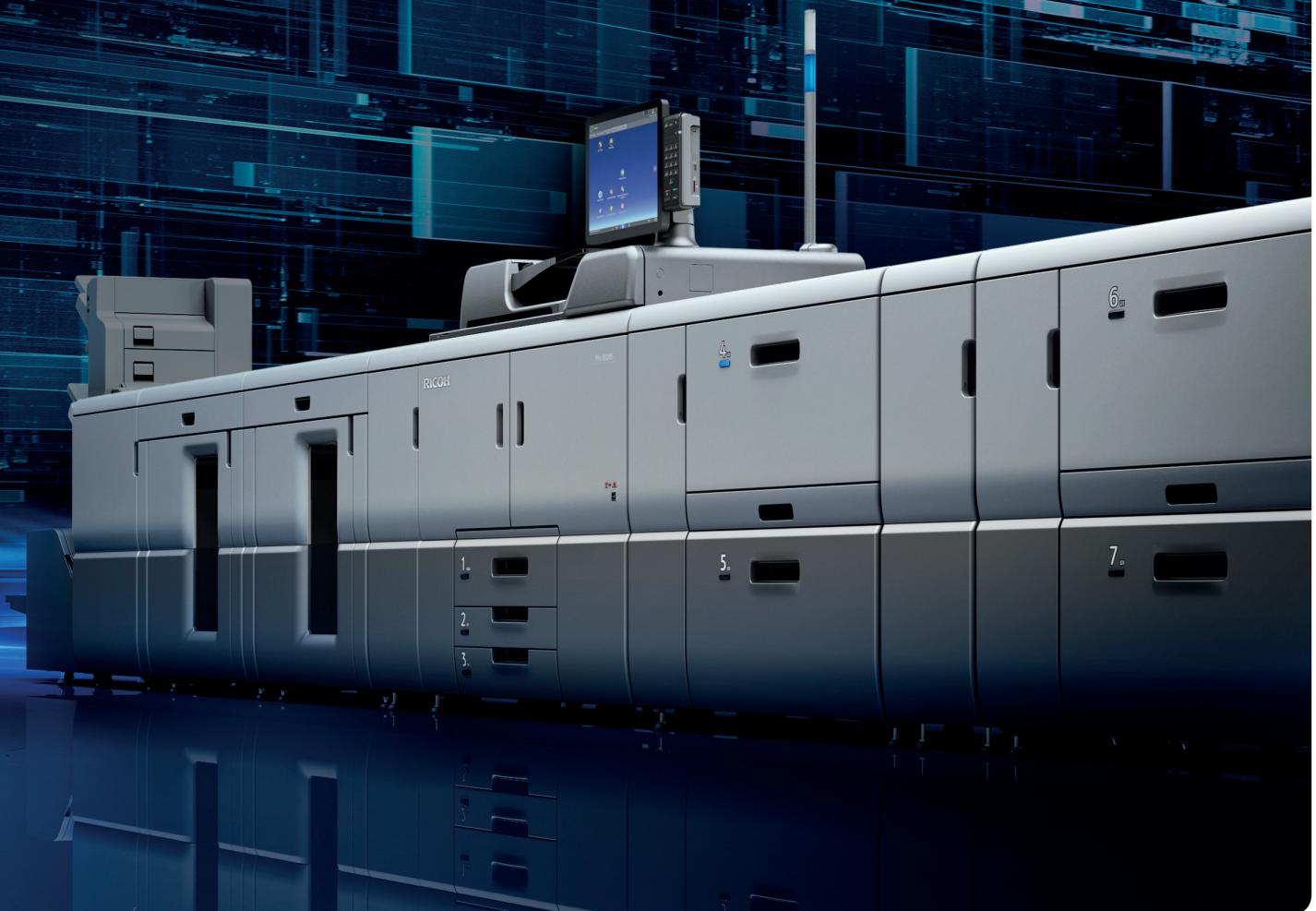
\*Vertical Cavity Surface Emitting Laser

## Uptime maximised

- Operators can replace Operator Replaceable Units (ORU) to maximise uptime
- Remote assist by Ricoh operator minimises downtime
- Simplified fuser section for faster and easier maintenance
- Faster warm up times and recovery from energy saver mode helps improve output and increase efficiency

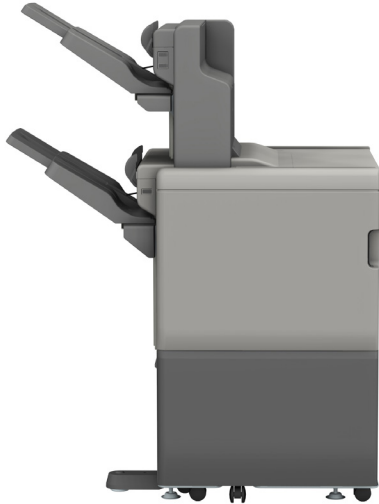
## Increased reliability

- Fewer paper jams to improve productivity
- Higher duty cycle
- Enhanced purge function for auto recovery



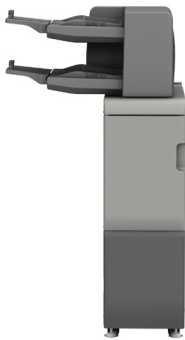


# Brand new options and opportunities



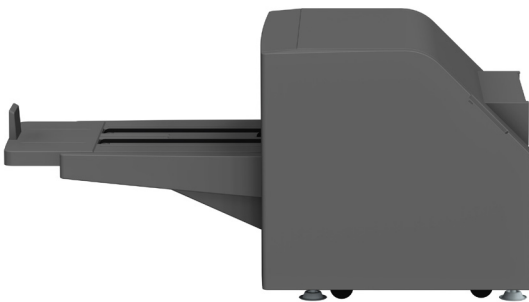
## New High-end Finisher

- More robust finisher with non-stop delivery
- Increased stack capacity with dual shift trays (1000 sheets, 3500 sheets)
- Enhanced saddle-stitching capabilities with max 30 sheets (80gsm)
- Better folding for thinner booklets to enhance production
- Support up to 350gsm
- Higher productivity



## New Interposer

- Coated paper can be fed continuously by air-assisted feeding from the leading edge
- Support up to 350gsm
- 2-tray per >200 sheets
- Stands on its own for stability



## New Trimmer

- Trims 30-sheet booklets to enhance productivity
- Fore edge trimmer



## New Bridge Unit

- Connect Plockmatic Booklet Maker to the mainframe without a finisher



# High-end advantages to keep you ahead

## New Ring binder

- Fully automates binding workflow, saving time and labour costs
- Ease of operation as the system process from printing to closing rings without manual intervention
- Two sizes of consumable rings are available for 50 or 100 A4 sheets
- Black/white coloured rings available
- Smaller footprint saves installation space

## GBC eWire Binder

- New fully automated inline binding system using traditional twin-loop wire binding eliminates manual processes for increased productivity
- Binds plain, coated and tabbed stock and paper weights from 63gsm up to 350gsm (16lb bond – 130lb cover)
- Produces high-end proposals, booklets, reports, directories, calendars, educational books and manuals and speciality books to expand your client base





## More benefits for higher volumes



### High Capacity Stacker

- Stacks up to 5000 sheets (SRA3, A4, LT size) on shift tray and 250 sheets on one proof tray
- Air-assist function for enhanced stack performance



### Vacuum Feed LCIT

- Improved pick-up/feeding increases productivity and reduces downtime
- Two trays can be connected



### Higher-output Capacity Finisher

New Finisher is capable to output 3500 sheets in shift tray and 1000 sheets to proof tray. It allows continuous printing in long runs.



# High-value opportunities

## Transactional printing

Ricoh's genuine IPDS print option opens the way for you to take advantage of high value transactional documents.

- Barcodes can be printed onto address labels, direct mail pieces and envelopes
- To maintain productivity, invoices and statements can be scheduled to print overnight
- Also supports Magnetic Ink Character Recognition (MICR) printing of cheques

## Accurate, full speed production

- Print streams are managed at page level for error-free production at full speed

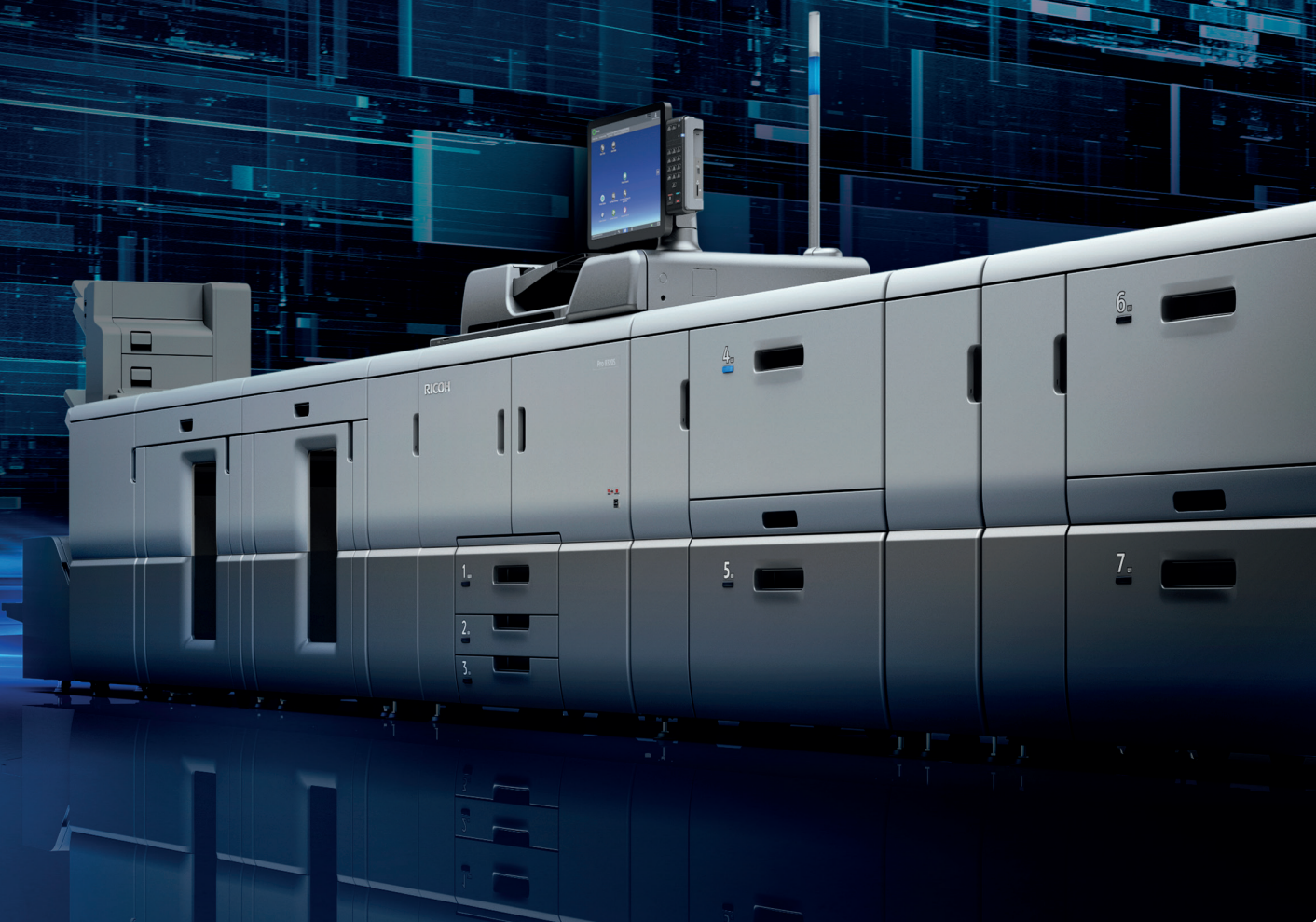
## Ricoh workflow solution

TotalFlow Production Manager offers a single solution to manage jobs across multiple output devices whilst enabling automated workflow functionality including integrated imposition\* and pre-flight\*\* to streamline production and reduce errors associated with problem files.

Both solutions offer open connectivity with Ricoh, EFI Fiery™ and third party \*\*\* Digital Front End.

(Powered by \* Ultimate and \*\*Enfocus )

\*\*\* Professional Services may be required.



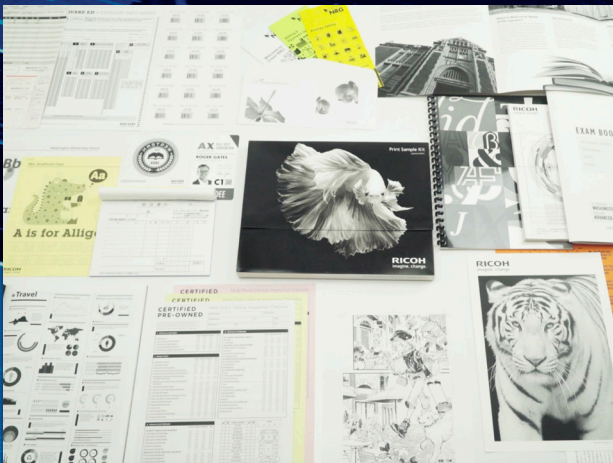


# Versatile media support



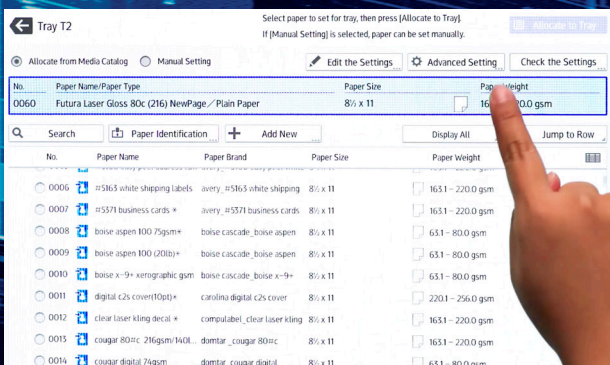
## Expand in-house production

- Superb printing performance on everything from carbonless paper, textured and coated media to envelopes and pre-printed forms
- Supports paper weights from 40gsm to 350gsm, option dependent
- Also supports larger sheet size up to 700mm



## More options to succeed

- Lets you offer clients everything from text books and luxury books to office documents, manuals and poster printing
- Enables the same media to be used for offset and digital production
- Optional decurl unit eliminates paper curl which can be a problem with the use of long grain and lightweight media



## Extensive media library

- Ricoh's extensive onboard media library provides automated settings for a variety of branded media and media types
- Simplifies set up and ensures reliable performance



# The power for performance

## Enhanced processing performance

Benefit from a high performance 1.91GHz Atom Processor, 2GB memory and 320GB x 2 SATA. It delivers faster processing of complex print jobs and supports finishing options to suit your needs and broaden your client offering.

## Robust functionality for maximum productivity

The new EFI controller EB-35 helps simplify file management and job workflow for greater efficiency.

- Export current view – allows users to export the information from their current Job centre view
- Link to EFI Smart Support - in-software link from Apps and Resources to EFI Smart Support, gives direct access to the EFI online knowledge base
- Fiery JobMaster update – file size is reduced for duplicate jobs
- JobFlow™ 2.5 ready





# All the options you need to succeed



- 1 Pro™ 8320/8310s Series
- 2 New large 17 inch Operation Panel
- 3 4,400 sheet vacuum feed large Capacity Tray
- 4 Standard Paper Trays
- 5 New Cover Interposer
- 6 5,000 sheet High Capacity Stacker
- 7 New Booklet Finisher
- 8 Optional Bypass



# Ricoh Pro™ 8320s/8310s series

## MAIN SPECIFICATIONS

### GENERAL

Print/Copy Process:	1-drum dry electrostatic transfer system with internal transfer belt
Fusing:	Oil-less belt-fusing method
Toner Type:	Newly formulated pulverized toner
Print Speed:	8310s and 8310: 111ppm 8320s and 8320: 136ppm
Resolution:	VCSEL: 2400 x 4800dpi Print: 1200 x 1200dpi
Warm-up time:	>300 seconds
Dimensions (W x D x H):	8300s: 1141mm x 900mm x 1558mm 8320s: 1141mm x 900mm x 1735mm 8310s: 1141mm x 900mm x 1735mm
Weight:	MFP model: 428kg Printer model: 413kg
Power Source:	EU: 220-240V, 16A, 50/60Hz
Life:	Life: 60,000,000 A4 pages or 5 years Duty cycle: 8320s/8320: 4million 8310s/8320: 3.3million

### SCANNER FEATURE

Resolution:	100/150/200/300/400/600dpi 200dpi as a default
Scan speed:	B&W 120 simplex/220 duplex (A4 LEF/200dpi) Colour 120 simplex/220 duplex (A4 LEF/200dpi)
Max Scan Area:	297 x 432mm

### MEDIA HANDLING

Paper Input Capacity:	1st tray (std) 1,100 sheets x 2 (Tandem Tray) 2nd tray (std) 550 sheets 3rd tray (std) 550 sheets A4/LT LCT (op) 4th tray 1,100 sheets 5th tray 1,100 sheets 6th tray 2,800 sheets A3/DLT LCT (op) 4th tray 1,100 sheets 5th tray 2,200 sheets 6th tray 1,100 sheets Bypass tray: 500 sheets Vacuum Feed LCT (op) T1 tray 2,200 sheets T2 tray 2,200 sheets
Max. Input Capacity:	12,600 sheets
Max. Output Capacity:	14,500 sheets
Paper size:	Width: 100 x 330.2mm Length: 139.7 x 700mm
Paper Weight:	1st tray (std) 52.3 - 256gsm 2nd tray (std) 52.3 - 256gsm 3rd tray (std) 52.3 - 256gsm A4/LT LCT 4th tray 52.3 - 216gsm 5th tray 52.3 - 216gsm 6th tray 52.3 - 163gsm A3/DLT LCT 4th tray 52.3 - 256gsm 5th tray 40.0 - 300gsm 6th tray 52.3 - 256gsm Tray A 52.3 - 216gsm Multi Bypass Tray: 52.3 - 216gsm Vacuum Feed LCT T1-T4 tray 40 - 350gsm

### CONTROLLER

Configuration:	Embedded
CPU:	Intel® Atom® Processor Bay Trail - 1 (1.91GHz)
Memory:	2GB
HDD:	640GB
DVD-ROM Drive:	N/A
Operating System:	Linux
Network Protocol:	TCP/IP (IP v4, IP v6)
PDL:	PCL5e, PCL6, PDF, JPEG, TIFF, XPS, RP/GL2
Optional:	Adobe PostScript 3, IPDS
Font:	PCL: 45 fonts, 13 International fonts
Network Interface:	Ethernet 1000Base-T/100Base-TX/10Base-T USB2.0 TypeA (2 port on controller board, 4 ports on operational panel), USB2.0 TypeB (2 ports on controller panel), SD Slot on operational panel

### EFI CONTROLLER

Configuration:	Optional: External
CPU:	Intel® Pentium® processor G4400 (3.3 GHz)
Memory:	8GB
HDD:	500 GB
DVD-RW Drive:	N/A
Operating System:	Windows® 10 IoT Enterprise 2016 LTSB
Network Protocol:	TCP/IP (IP v4, IP v6), SMB
PDL:	PostScript 3 (CPSI ver.3020 & APPE ver.4.4), PCL6
Supported Data Format:	PS, PDF, PDF/X, EPS, TIFF, PCL, PDF/VT, PPML, VPS
Print Resolution:	1200dpi/2bit
Font:	PS3 136 + 2mm, PCL80
Network Interface:	Ethernet 1000 - T/100 - TX/10 base - T

### OTHER OPTIONS

Input:	Vacuum Feed Large Capacity Tray (Vacuum Feed LCIT RT5120), A4/LT Large Capacity Tray (RT5130), 13" x 19.2" Large Capacity Tray (RT5110), A3/DLT Tray Kit (TK5020), Multi Bypass Tray (BY5020), Multi Bypass Banner Sheet Tray Type S9, Cover Interposer Tray (CI5040), Plockmatic High Capacity Interposer (HCI3500), Vacuum Feed banner Sheet Tray Type S9
Output:	Finisher (SR5110), Booklet Finisher (SR5120), Punch Unit (PU5030), Booklet Trimmer (TR5050), Ring Binder (RB5030), Perfect Binder (GB5010), Multi-Folding Unit (FD5020), High Capacity Stacker (SK5040), Plockmatic PBMe, Plockmatic MPS stacker, GBC Stream Punch Ultra, GBC E-wire Binder
Others:	Bridge Unit (BU5020), Buffer Pass Unit Type S11, Decurl Unit (DU5070), ORU Type S11, PostScript3 Unit Type S11, IPDS Unit Type S11/S12, RPI Interface Box Type S3, Media Identification Unit Type S3 EFI™ Fiery Controller EB-35

### WORKFLOW SOLUTIONS

Ricoh TotalFlow Prep & Production Manager, TotalFlow BatchBuilder, Ricoh ProcessDirector, InfoPrint Manager, MarcomCentral, FusionPro VDP Suite, EFI Digital StoreFront, EFI Graphic Arts Premium Package, EFI Impose & Compose, OL Connect Suite



RICOH @Remote



GlobalScan NX

**RICOH**  
imagine. change.

www.ricoh-europe.com

The facts and figures shown in this brochure relate to specific business cases. Individual circumstances may produce different results. All company, brand, product and service names are the property of and are registered trademarks of their respective owners. Copyright © 2019 Ricoh Europe PLC. All rights reserved. This brochure, its contents and/or layout may not be modified and/or adapted, copied in part or in whole and/or incorporated into other works without the prior written permission of Ricoh Europe PLC.



Compact B&W Digital Office  
Production Printers

# Ricoh Pro™ 8300s

✓ Copier ✓ Printer ✓ Scanner

**RICOH**  
imagine. change.



Pro 8300s

96 B/W  
ppm



## Small in size. Big in flexibility

Limited on space? Need a simpler printing solution that's both easy to use and reliable? The Ricoh Pro 8300s brings you market-leading innovation wrapped up in a small footprint, which makes it the ideal fit for office and school environments.

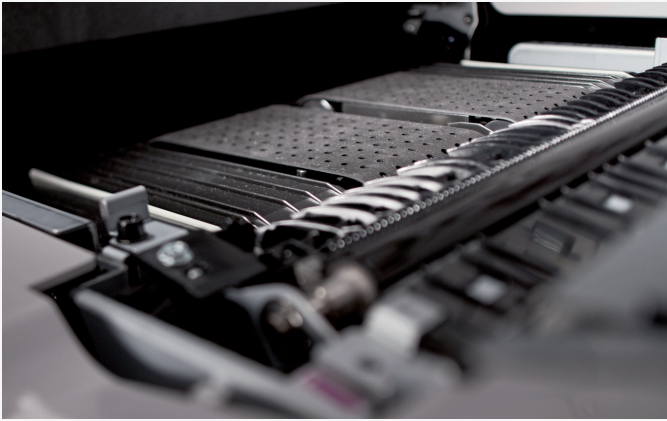
Along with enhanced image quality delivered at 96 pages per minute, the compact Pro 8300s comes with a brand new smaller finisher and simple output tray to reduce the system size.

With improved user-friendliness and higher productivity it offers the reliability you need each and every day.

- Smaller footprint
- Shorter waiting time
- Enhanced copy functions
- Better reliability
- Simpler to use







### **Designed to be productive and reliable**

Delivers high volume, black and white output at speeds up to 96ppm providing the quality and reliability you need.



### **The perfect fit**

With floor space at a premium, the small footprint and new downsized finisher of the Ricoh Pro 8300s accommodates all your needs, including restricted budgets.



### **Enhanced copy function**

New technology allows you to minimize darker area around a spine, which is generated when copying books, for clearer, easier to read results.



### **High image quality**

The Pro 8300s uses VCSEL\* technology to provide clean, smooth high definition image quality with 2400 x 4800 dots per inch resolution and higher consistent image quality over long runs.

\*Vertical Cavity Surface Emitting Laser



# Increase your output with ease

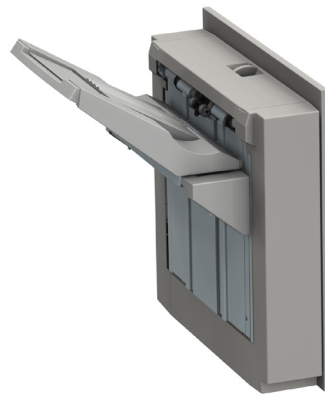
## Easier for everyone to use

- New large 17 inch operation panel for simpler usage
- Machine configuration can be shown
- For remote operation the panel screen can be used on a tablet



## Simple output tray

The brand new simplified output tray with slide and shift for each set, has a 1250 sheet capacity of 52-216gsm, making light work of collecting everything you print.



## Improved reliability

- Improved purge function for better productivity
- New LED guidance for ease of operation





## Better productivity and value



### Media capability

- Enhances your output versatility
- Handles a wide range of paper including carbonless paper, textured and coated paper plus weights up to 300gsm



### Uptime maximised

- Operators can replace Operator Replaceable Unit (ORU) to maximise uptime
- Remote assist capability to maximise uptime



### Shorter waiting times

Faster warm-up time helps increase efficiency to give you the outstanding results you need.





## New finisher for small spaces

- The low cost and space-saving finisher has a small footprint of 657mm length, total 1798mm including mainframe
- Output paper weight from 52 - 300gsm, saddle stitched up to 20 sheets, side stitched up to 65 sheets
- The shift tray can stack 3000 A4 sheets and 1500 A3 sheets to increase productivity





# Pro 8300s



- 1 Pro 8300s series
- 2 Colour LCD Panel
- 3 5000 sheet A4 LCT
- 4 Standard paper trays
- 5 Booklet Finisher
- 6 ARDF Document Feeder



# Ricoh Pro 8300s

## MAIN SPECIFICATIONS

### GENERAL

Print/Copy Process:	1-drum dry electrostatic transfer system with internal transfer belt
Fusing:	Oil-less belt-fusing method
Toner Type:	Newly formulated pulverised toner
Print Speed:	96ppm
Resolution:	VCSEL: 2400 x 4800dpi Print: 1200x1200dpi
Warm-up time:	300 seconds or less
Dimensions (W x D x H):	8300s: 1141 x 900 x 1558mm (including status light)
Weight:	413kg
Power Source:	EU: 220-240V, 16A, 50/60Hz
Max Monthly Volume:	> Life: 60,000,000 A4 pages or 5 years Duty cycle: 8300s - 2.9 million

### SCANNER FEATURE

Resolution:	100/150/200/300/400/600dpi 200dpi as a default
Scan speed:	B&W 120 simplex/220 duplex (A4 LEF/200dpi) Colour 120 simplex/220 duplex (A4 LEF/200dpi)
Max Scan Area:	297 x 432mm

### MEDIA HANDLING

Paper Input Capacity:	1st tray (std) 1,100 sheets x 2 (Tandem Tray) 2nd tray (std) 550 sheets 3rd tray (std) 550 sheets A4/LT LCT (op) 4th tray 1,100 sheets 5th tray 1,100 sheets 6th tray 2,800 sheets A3/DLT LCT (op) 4th tray 1,100 sheets 5th tray 2,200 sheets 6th tray 1,100 sheets Bypass tray: 500 sheets
Max. Input Capacity:	8,500 sheets
Max. Output Capacity:	3,000 sheets
Paper size:	Width: 100 x 330.2mm Length: 139.7 x 487.7mm
Paper Weight:	1st tray (std) 52.3 - 256gsm 2nd tray (std) 52.3 - 256gsm 3rd tray (std) 52.3 - 256gsm A4/LT LCT 4th tray 52.3 - 216gsm 5th tray 52.3 - 216gsm 6th tray 52.3 - 163gsm A3/DLT LCT 4th tray 52.3 - 256gsm 5th tray 40.0 - 300gsm 6th tray 52.3 - 256gsm Tray A 52.3 - 216gsm

### CONTROLLER

Configuration:	Embedded
CPU:	Intel® Atom® Processor Bay Trail - 1 (1.91GHz)
Memory:	2GB
HDD:	640GB
DVD-ROM Drive:	N/A
Operating System:	Linux
Network Protocol:	TCP/IP (IP v4, IP v6)
PDL:	PCL5e, PCL6, PDF, JPEG, TIFF, XPS, RP/GL2
Optional:	Adobe PostScript 3, IPDS
Font:	PCL: 45 fonts, 13 International fonts
Network Interface:	Ethernet 1000Base-T/100Base-TX/10Base-T USB2.0 TypeA (2 port on controller board, 4 ports on operational panel), USB2.0 TypeB (2 ports on controller panel), SD Slot on operational panel

### OTHER OPTIONS

Input:	A4/LT Large Capacity Tray (RT5130), A3/DLT LCT (RT5110), A3/DLT Tray Kit (TK5020), Multi Bypass Tray (BY5020)
Output:	Finisher (SR5090), Booklet Finisher (SR5100), Punch Unit (PU3090), Shift Sort Tray SH5000
Others:	Decurl Unit (DU5070), ORU Type S11, PostScript3 Unit Type S11, IPDS Unit Type S11, Attention Light AL3000

### WORKFLOW SOLUTIONS

Ricoh TotalFlow Prep & Production Manager, FusionPro VDP Suite



RICOH @Remote



GlobalScan NX

**RICOH**  
imagine. change.

www.ricoh-europe.com

The facts and figures shown in this brochure relate to specific business cases. Individual circumstances may produce different results. All company, brand, product and service names are the property of and are registered trademarks of their respective owners. Copyright © 2019 Ricoh Europe PLC. All rights reserved. This brochure, its contents and/or layout may not be modified and/or adapted, copied in part or in whole and/or incorporated into other works without the prior written permission of Ricoh Europe PLC.